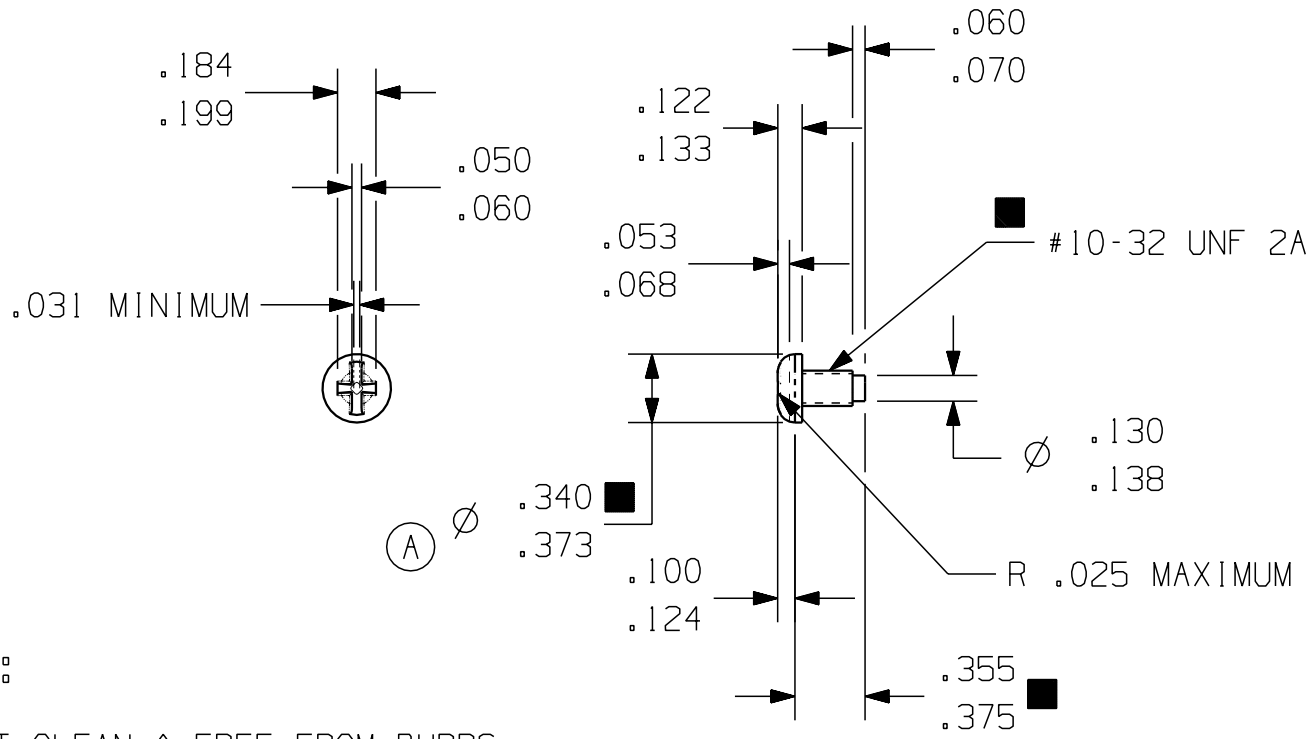


DRAWING NO.
10752-C6



NOTE :

- 1. MUST CLEAN & FREE FROM BURRS.
- 2. FINISH: ZINC PLATE.
- 3. PLATING PER T.P.Co. SPEC. #H-43.
- Ⓢ 5. MATERIAL: S.A.E. 1010 TO 1022 PER S.A.E. J403 (1995) NO HEAT TREAT ALLOWED

ENGLISH

O.A. SYMBOLS

- ★ = CATEGORY I
- ▲ = CATEGORY II
- = CATEGORY III
- = CATEGORY IV

VS
HS
AV
AG
ALL

BANNER User: gcowen Part/Rev: all-10752-c6_c-o-prt Date: 27-Jul-06 Time: 13:28

DIS.CODE 215	NAME # 10-32 COMBINATION PHILLIPS-SLOTTED PAN HEAD SCREW (SPEC.DOG POINT)			
	DWN. R.M.D. 12-16-92	CK. ON FILE	APR. ON FILE	SCALE 1:1 & NOTED
TECUMSEH PRODUCTS CO. TECUMSEH, MICHIGAN				DRAWING NO. 10752-C6
MATERIAL SEE NOTE Ⓢ				
DRAWING No. MD888-01		REVISION LEVEL: REL		

THIS DRAWING OR PRINT (I) IS THE PROPERTY OF TECUMSEH PRODUCTS. IT IS TO BE USED ONLY FOR THE INFORMATION BELONGING TO TECUMSEH. (I) IS MADE AVAILABLE TO THE RECIPIENT ON THE EXPRESS AND SPECIFIC CONDITION THAT NEITHER IT NOR THE INFORMATION CONTAINED THEREON OR DISCLOSED THEREIN SHALL BE DISCLOSED OR MADE AVAILABLE TO OTHERS WITHOUT THE EXPRESS AND SPECIFIC WRITTEN CONSENT OF TECUMSEH AND THAT SUCH INFORMATION ONLY AS EXPRESSLY AND SPECIFICALLY APPROVED IN WRITING BY TECUMSEH AND NOT OTHERWISE. (I) SHALL NOT BE COPIED OR DUPLICATED IN ANY MANNER OR TO ANY EXTENT WITHOUT TECUMSEH'S PRIOR EXPRESS AND WRITTEN CONSENT. (I) SHALL BE RETURNED TO TECUMSEH AT THE RECIPIENT'S REQUEST PROMPTLY AFTER SUCH REQUEST IS MADE.

#240078-871 MATL SPEC WAS TPC H-75 ADD VS & HS TO FAMILY	G.COWEN 31 JUL 06
#240574-089 REDRAWN & MODEL ON CAD	EAC 16 MAR 05
WAS Ø .357-.373 #228142	HOWELL 7-13-93
#226493 WAS EX101-428	R.D.W. 3-10-93
DATE	
CHANGE	
LT	
LC	